

*More on
Lung Cancer Study*

How will participating in this study help in the fight against lung cancer?

- Participation in this study will help scientists understand more about the genetic causes of lung cancer, which in turn will help physicians find better ways to prevent, detect, and successfully treat lung cancer.
- Participation may ultimately lead to the development of clinical testing for persons at an increased risk for lung cancer.
- Individuals who take part in this study will not benefit directly from it, but rather, they will be making a positive impact on the lives of their future generations.

Funds to support this study have been obtained from:

National Human Genome Research Institute (NHGRI)
National Institutes of Health (NIH)

The Lung Cancer Study is part of the Genetic Epidemiology of Lung Cancer Consortium (GELCC):

- Dartmouth-Hitchcock Norris Cotton Cancer Center
- Harvard School of Public Health
- Karmanos Cancer Center
- **Louisiana State University Health Sciences Center—New Orleans**
- Mayo Clinic and Foundation
- National Human Genome Research Institute
- University of Cincinnati
- University of Toledo Medical Center

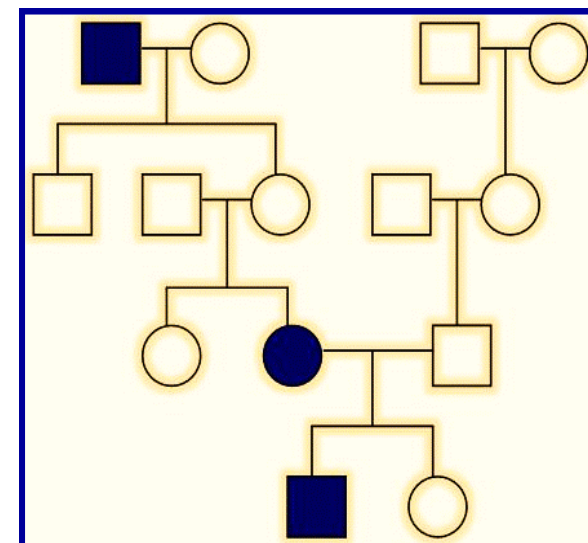


Diptasri Mandal, Ph.D.
LSU Health Sciences Center
Department of Genetics
533 Bolivar Street, CSRB 6-16
New Orleans, LA 70112

Toll-free: 1-888-720-7757
Email: LungCaStudy@lsuhsc.edu
Website: <http://www.medschool.lsuhs.edu/lungcancer.edu/lungcancer>

Thank you for taking the time to consider our study. If at any time you have questions, please do not hesitate to contact us.

**A Research Study
on Lung Cancer**



*Louisiana State University Health Sciences
Center—New Orleans*

Lung Cancer Study

What is the Lung Cancer Study?

- This is a research study aimed at finding the genes that may increase a person's risk of developing lung cancer.
- This study also aims to understand how the genes interact with environmental factors in causing lung cancer.

What information does the Lung Cancer Study collect?

- Demographic, medical, and environmental history information by mail and/or phone.
- A one-time-only blood sample and/or saliva sample, at your convenience, with the collection kits provided.
- Pathology reports and/or tissue samples if diagnosed with lung cancer.
- Participation is voluntary. You may withdraw from the study at any time.

Who can participate in this study?

- Anyone diagnosed with lung cancer is encouraged to contact us.
- Those who contact us will be asked a few questions to determine whether they meet the study's eligibility criteria to participate.
- Family members may also have the opportunity to participate.

Can I participate in this study even if I do not live in New Orleans?

- Yes, everything can be done from any city or location in the United States, and participation will not take up much of your time.

Is there any cost to participate?

- No, there is no cost to participate. All materials will be provided to you free of charge.

Lung Cancer Study Investigators:

Dr. Diptasri Mandal, PhD: (504) 568-6156
dmanda@lsuhsc.edu

Angelle Bencaz, MSPH: (504) 568-2216
abenca@lsuhsc.edu

Jessica Chambliss, MS, CRC: (504) 568-7027
jcham5@lsuhsc.edu

Is the information collected for this study protected?

- Yes, we are fully HIPAA compliant and have obtained a Certificate of Confidentiality from the NIH.
- All information collected is coded and stored in a confidential manner. No identifiable information is shared with anyone outside the study.



Why should people participate in this study?

- Lung cancer is the second most common type of cancer diagnosed in the United States and one of the leading causes of cancer-related deaths. Each year, more lives are lost to lung cancer than to colon, breast, and prostate cancers combined.